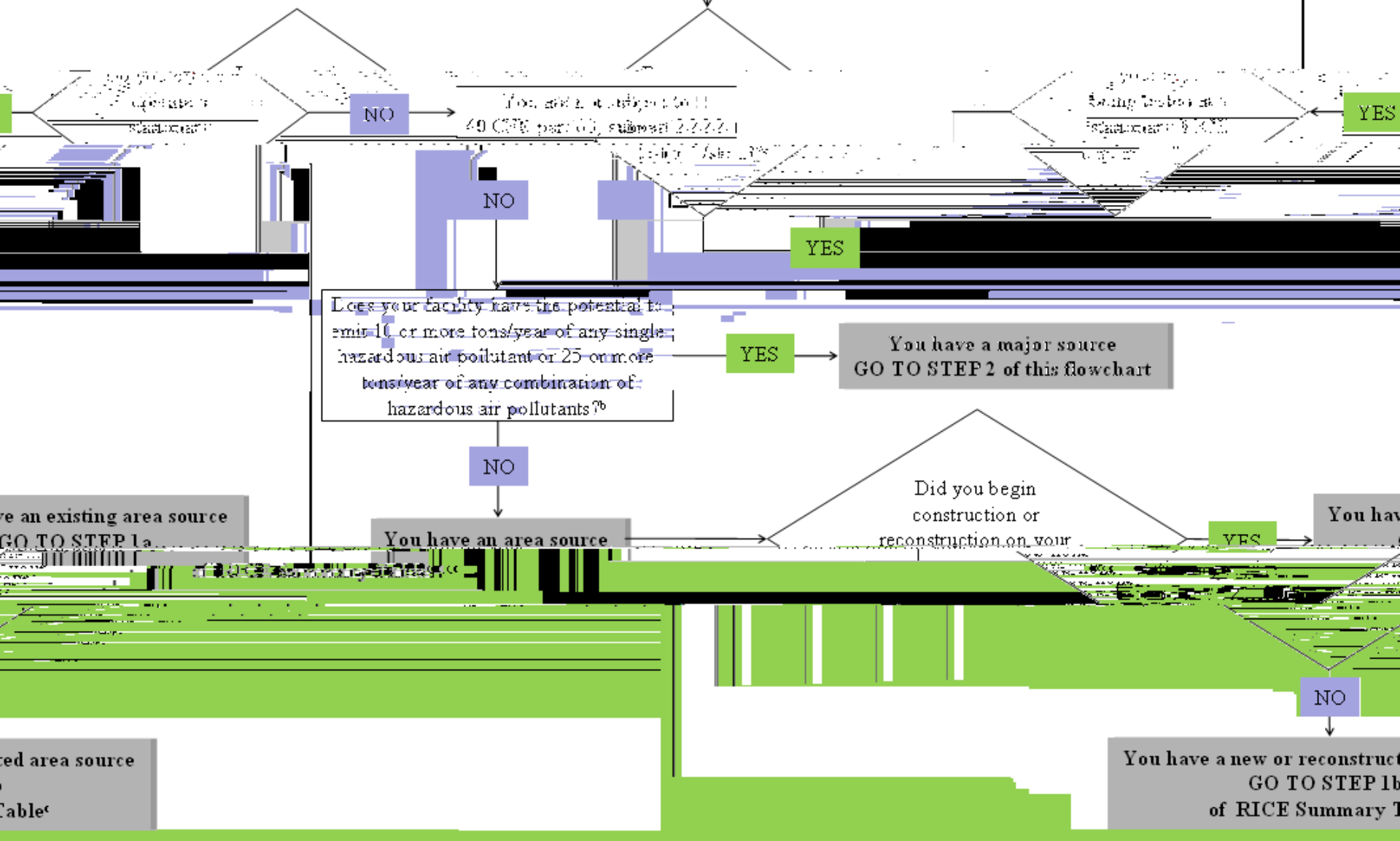


Stationary Reciprocating Internal Combustion Engines (RICE)

40 CFR part 63, subpart ZZZZ
Applicability Flowchart

START



are an existing area source
GO TO STEP 1a

Does your facility have the potential to emit 10 or more tons/year of any single hazardous air pollutant or 25 or more tons/year of any combination of hazardous air pollutants?

You have a major source
GO TO STEP 2 of this flowchart

You have an area source

Did you begin construction or reconstruction on your facility?

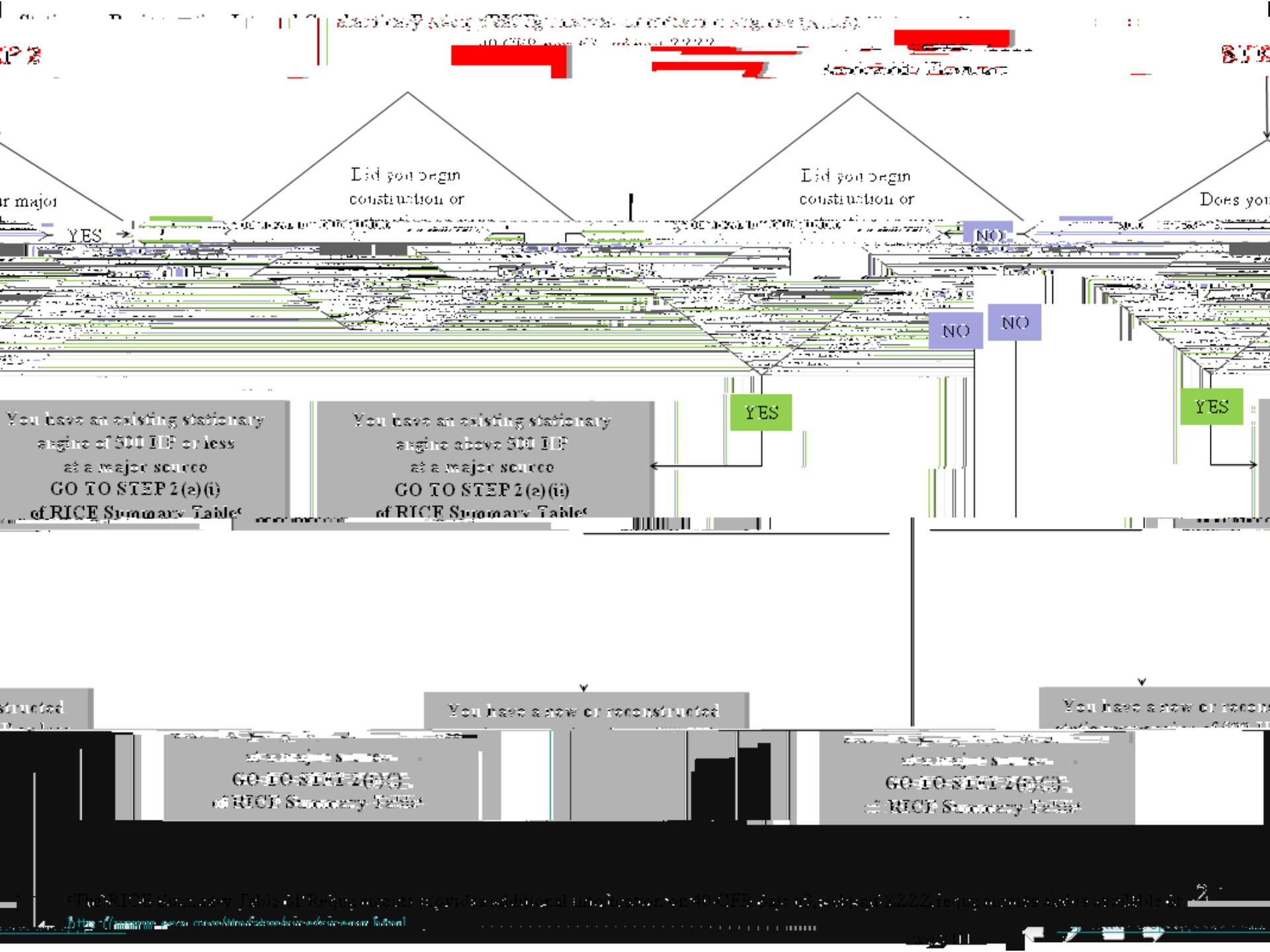
You have a new or reconstructed area source
GO TO STEP 1b of RICE Summary Table

red area source
Table

You have a new or reconstructed area source
GO TO STEP 1b of RICE Summary Table

^aUninstalled mobile (notices) engines. For more information, visit <http://www.epa.gov/ttn/chief/ap42/index.html> or contact your EPA regional office.

^bTesting the test cell/sound is any apparatus used for testing uninstalled stationary engines. For assistance in determining the potential to emit, please refer to <http://www.epa.gov>.



major

Did you begin construction or reconstruction of a major source with a stationary engine of 500 HP or less?

Did you begin construction or reconstruction of a major source with a stationary engine above 500 HP?

Does your major source have a new or reconstructed stationary engine of 500 HP or less?

YES

NO

NO

NO

YES

YES

You have an existing stationary engine of 500 HP or less at a major source. GO TO STEP 2(a)(i) of RICE Summary Table.

You have an existing stationary engine above 500 HP at a major source. GO TO STEP 2(a)(ii) of RICE Summary Table.

You have a new or reconstructed stationary engine of 500 HP or less at a major source. GO TO STEP 2(a)(i) of RICE Summary Table.

reconstructed stationary engine of 500 HP or less at a major source. GO TO STEP 2(a)(i) of RICE Summary Table.

You have a new or reconstructed stationary engine above 500 HP at a major source. GO TO STEP 2(a)(ii) of RICE Summary Table.

You have a new or reconstructed stationary engine above 500 HP at a major source. GO TO STEP 2(a)(ii) of RICE Summary Table.

GO TO STEP 2(a)(i) of RICE Summary Table

GO TO STEP 2(a)(ii) of RICE Summary Table

GO TO STEP 2(a)(i) of RICE Summary Table